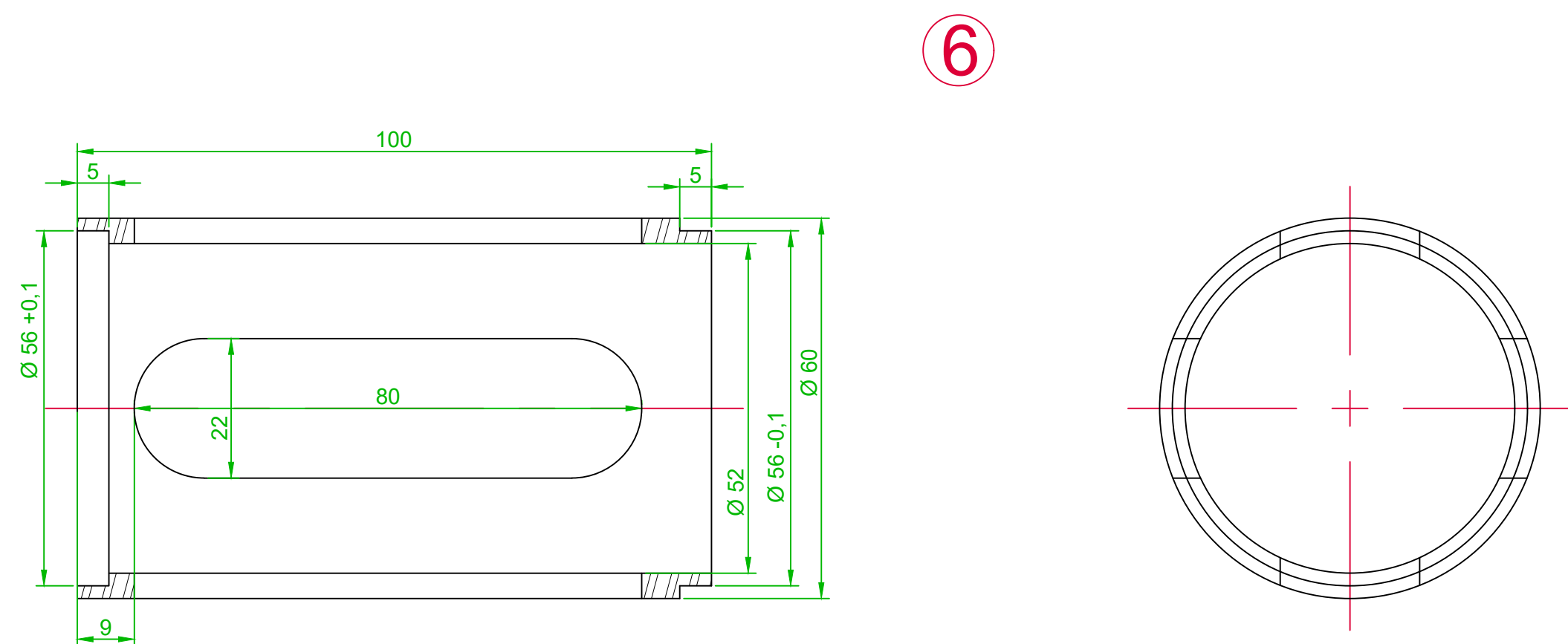


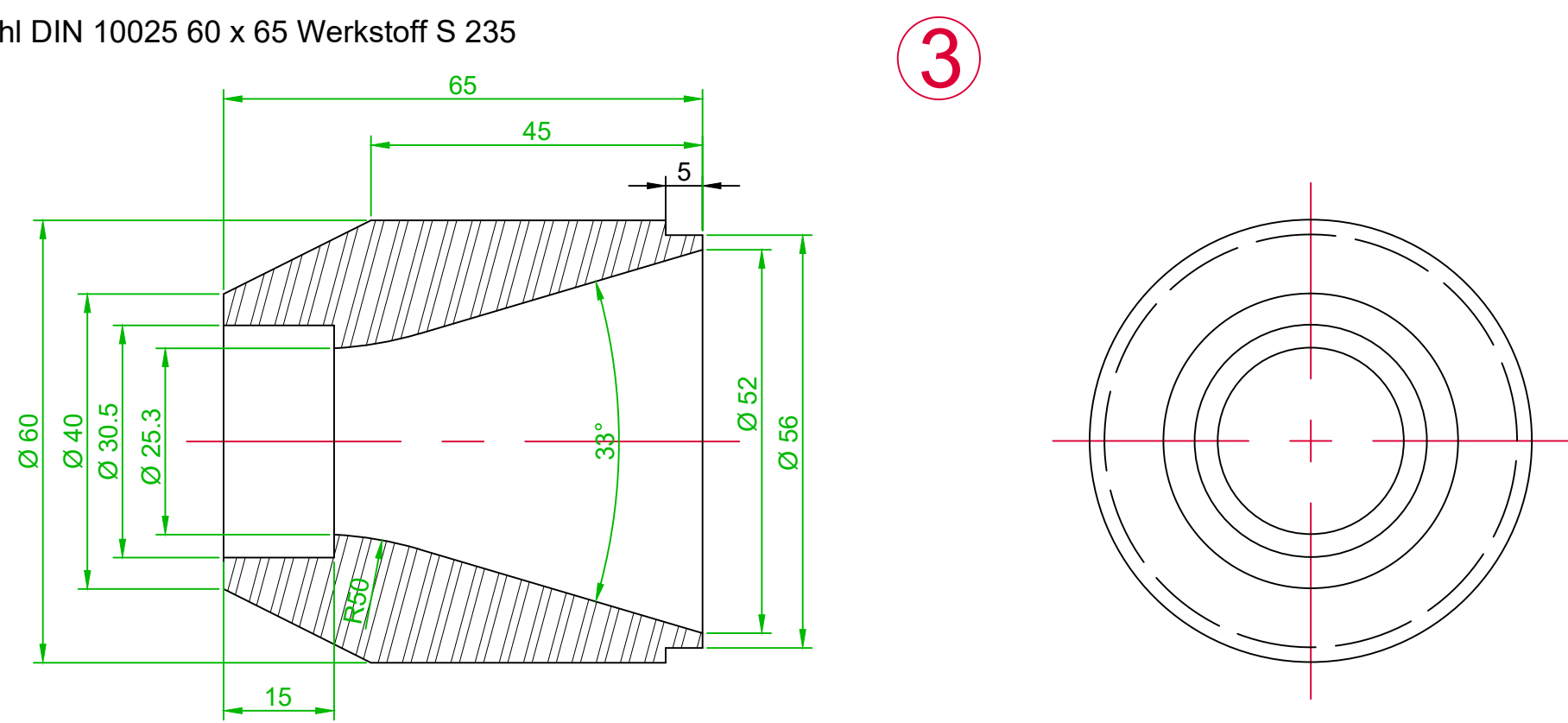
Lufteinlass

Stahlrohr DIN 2448 60,3 x 4,5 x 100 Werkstoff S 235



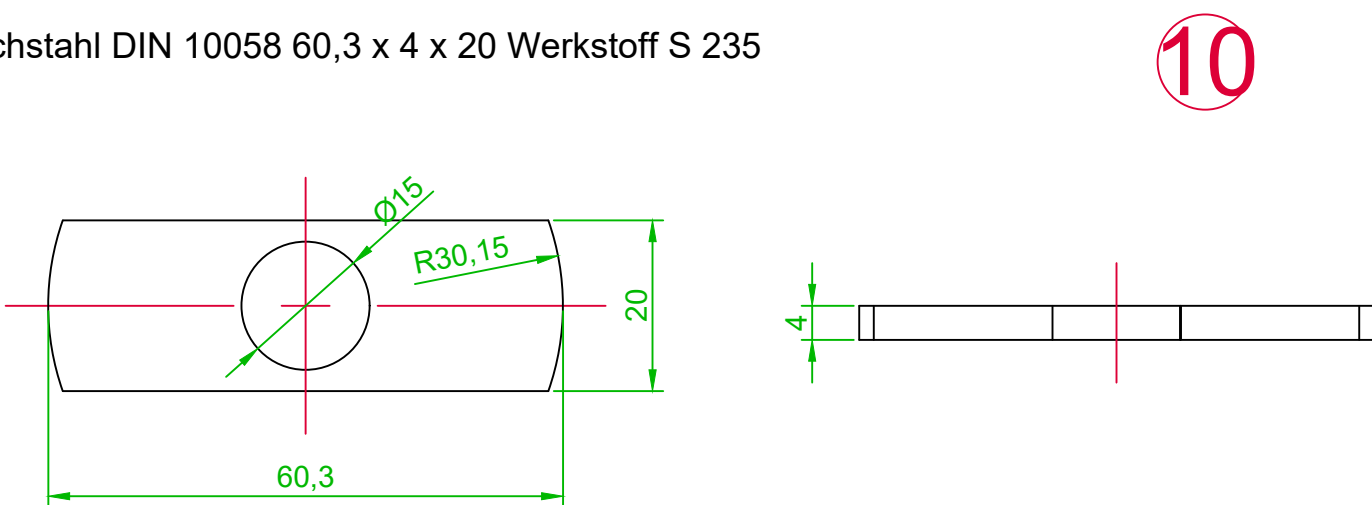
Venturie

Rundstahl DIN 10025 60 x 65 Werkstoff S 235



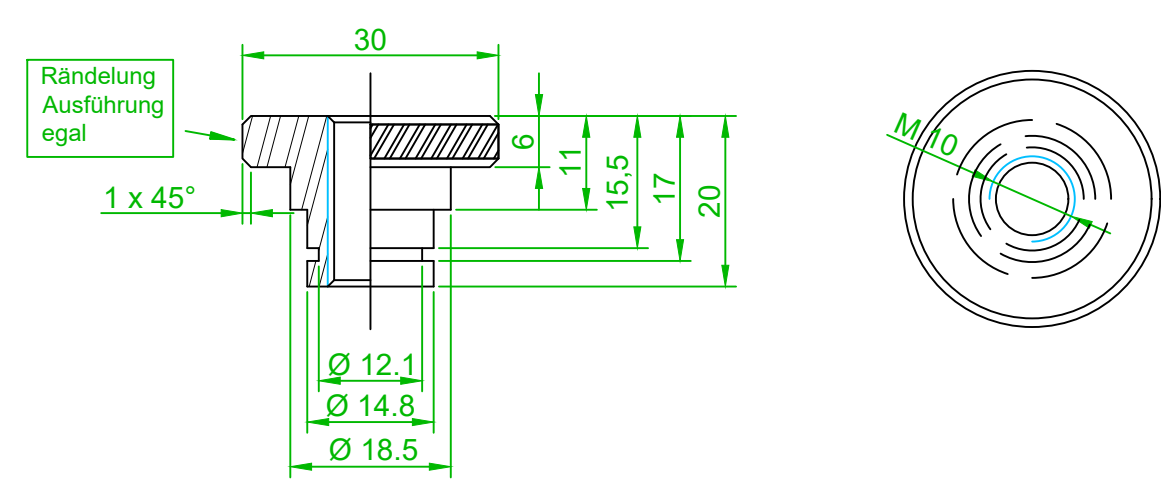
Justierflansch

Flachstahl DIN 10058 60,3 x 4 x 20 Werkstoff S 235



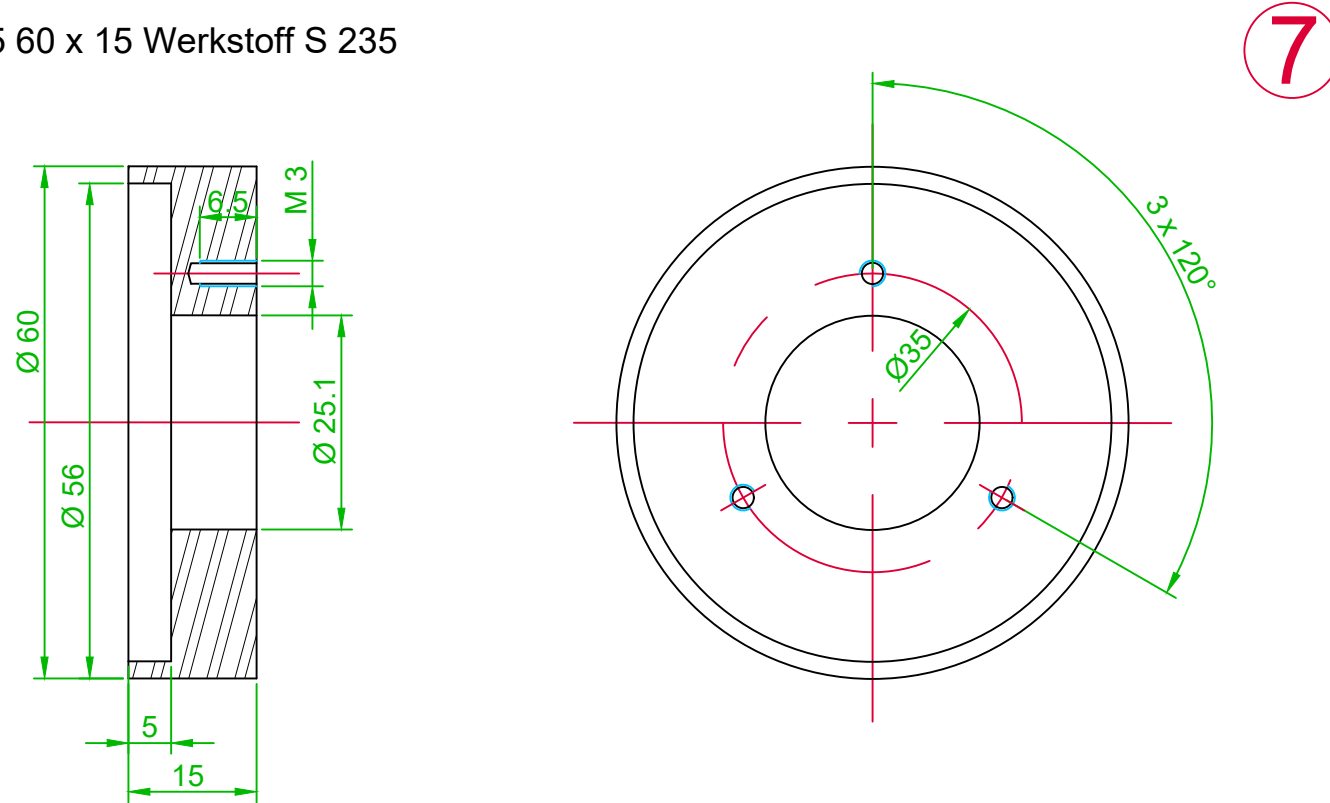
Justiermutter

Rundstahl DIN 10025 30 x 20 Werkstoff S 235



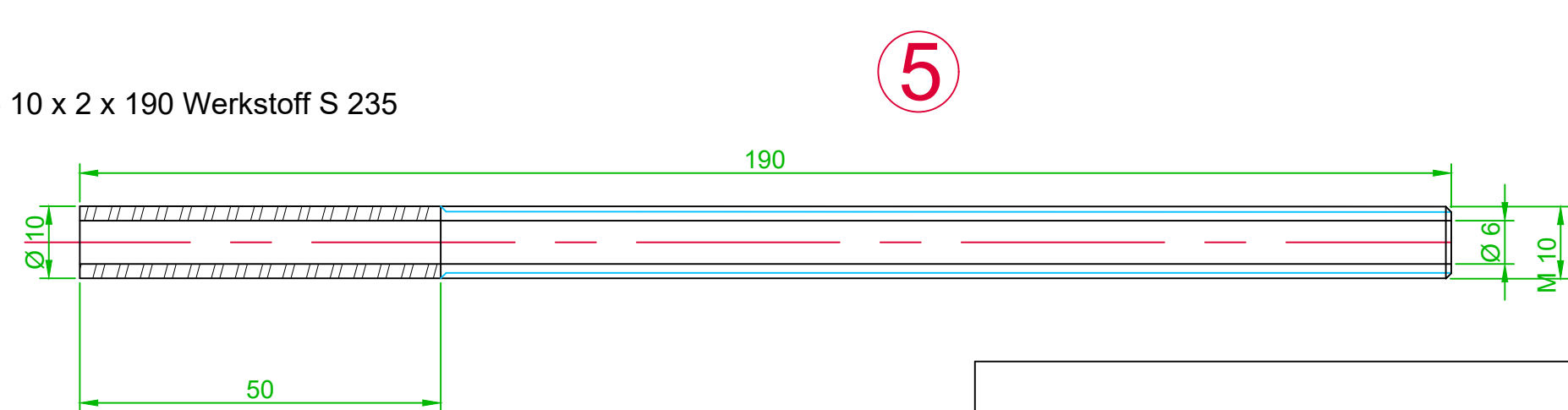
Adaptation

Rundstahl DIN 10025 60 x 15 Werkstoff S 235



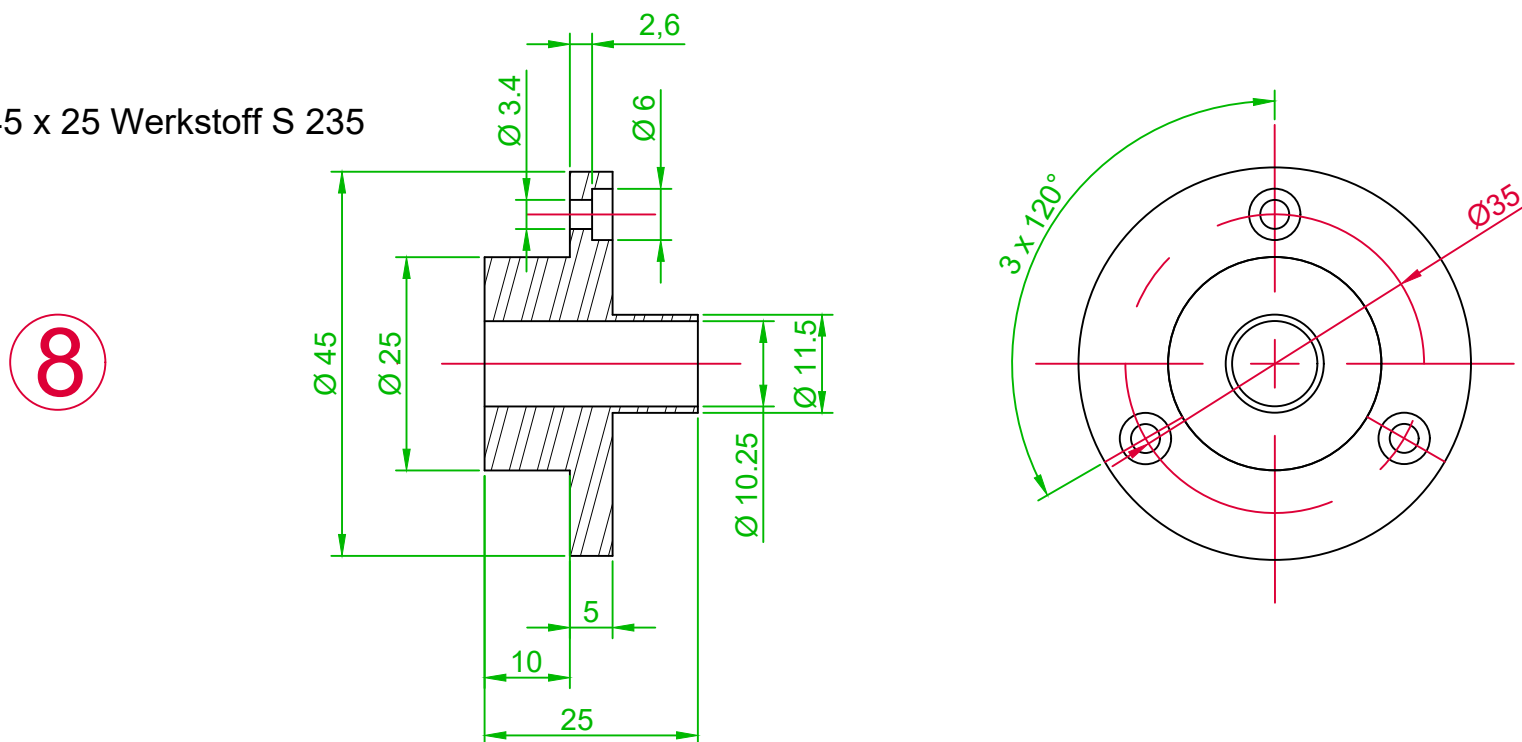
Gaseinstellrohr

Nahtloses Präzisionsstahlrohr DIN EN 10305 10 x 2 x 190 Werkstoff S 235



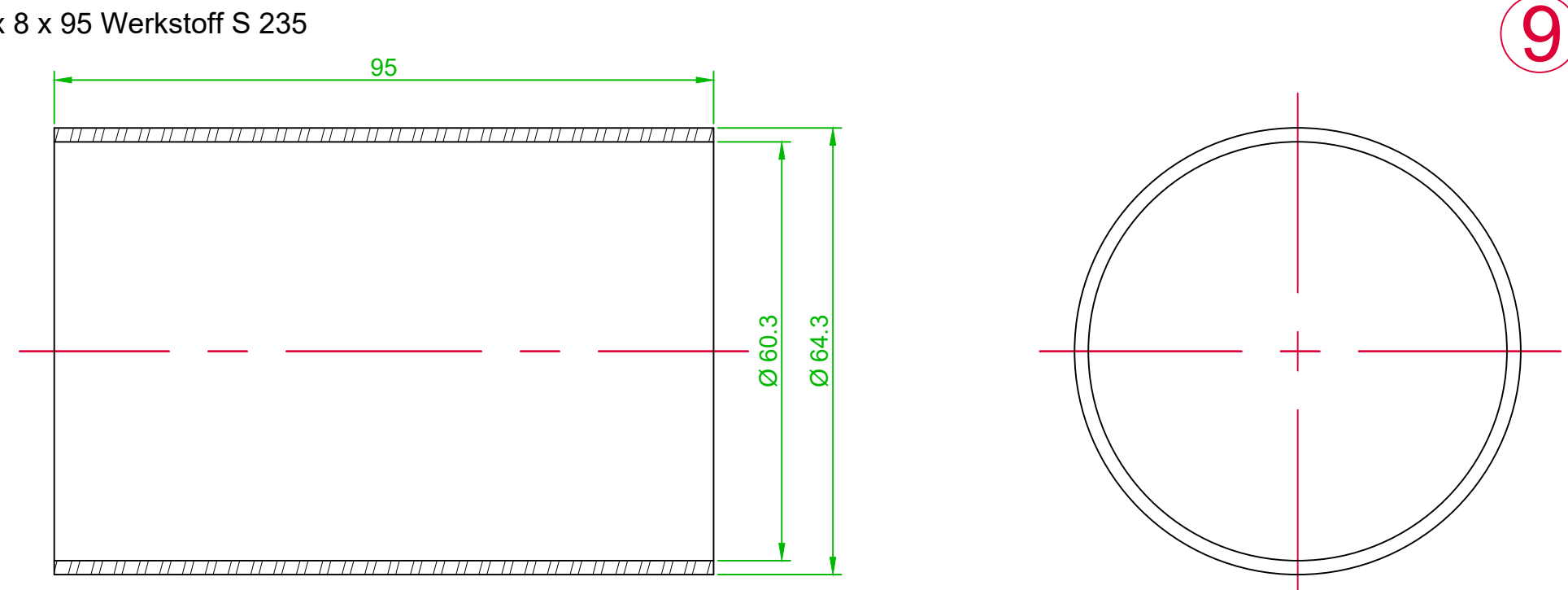
Adapter

Rundstahl DIN 10025 45 x 25 Werkstoff S 235



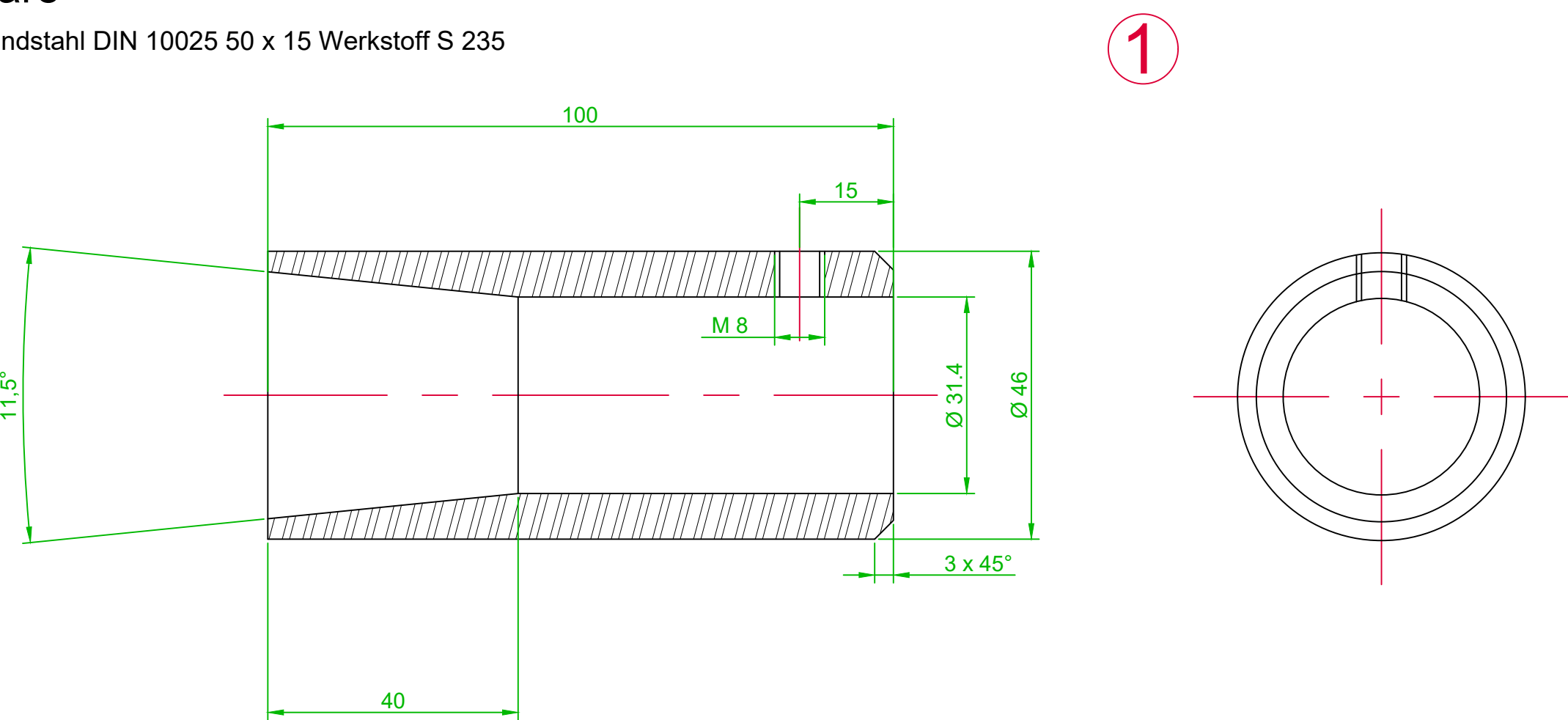
Choke

Stahlrohr DIN 2448 70 x 8 x 95 Werkstoff S 235



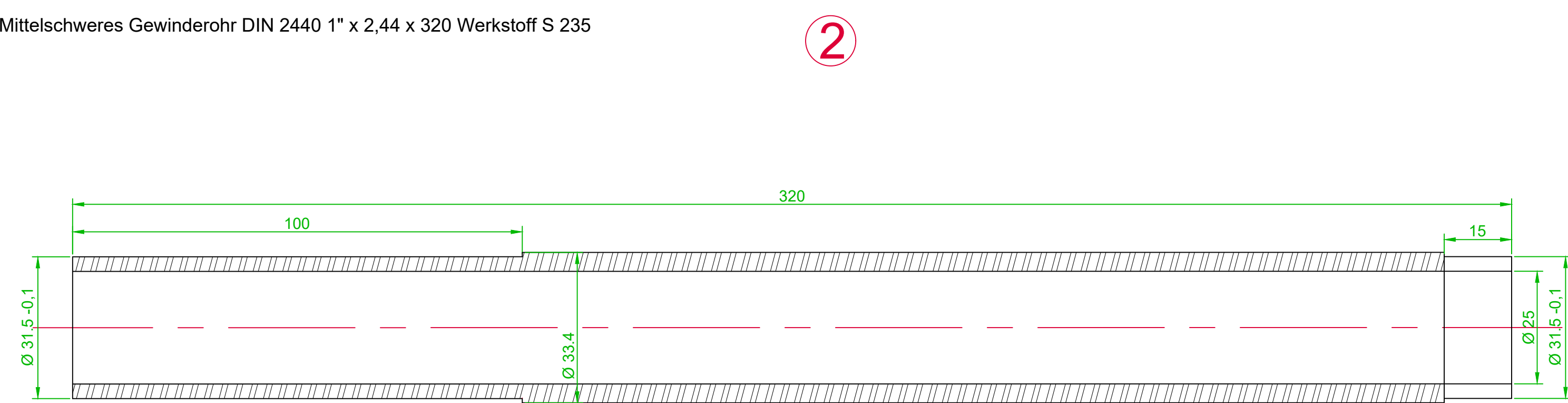
Flare

Rundstahl DIN 10025 50 x 15 Werkstoff S 235



Mischrohr

Mittelschweres Gewinderohr DIN 2440 1" x 2,44 x 320 Werkstoff S 235



Gasdüsenaufnahme

Rundstahl DIN 10025 10 x 35 Werkstoff S 235

