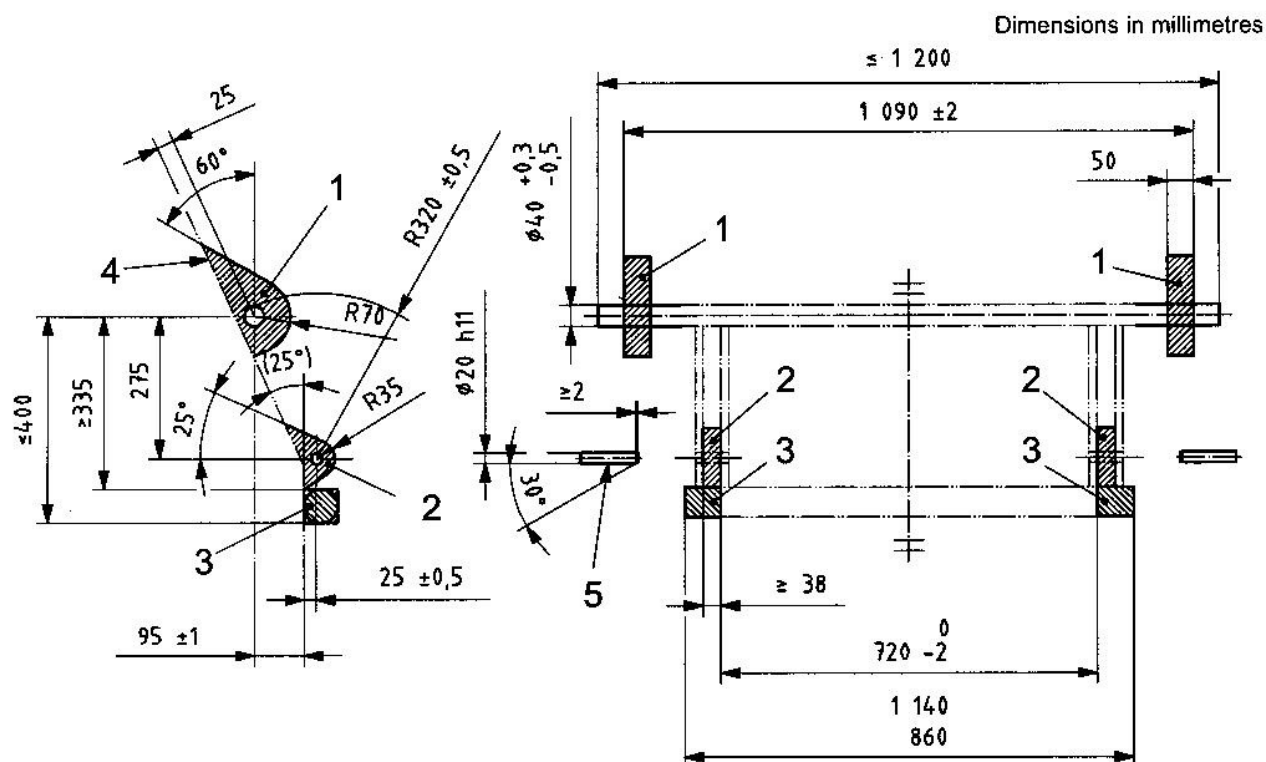


Page 3, Figure 3

Replace the figure by the following one.



Key

- 1 clearance for hook
- 2 clearance for eyelet
- 3 buffer for attachment
- 4 border of front of carriage
- 5 locking pin

Figure 3 — Carriage dimensions

Explanation of the replacement of the figure

For proper coupling/function of the carriage, in the right-hand side of the drawing it is necessary that the horizontal dimension that was formerly ≥ 35 mm, in combination with the dimension $720 \begin{smallmatrix} 0 \\ -2 \end{smallmatrix}$ mm, be in any case greater than the horizontal dimension $790 \text{ mm} \pm 2 \text{ mm}$ in Figure 4.

The sum of the smallest values allowed for dimensions ≥ 35 mm (35 mm itself) and 720 mm (718 mm) is 788 mm — just the lower limit of dimension $790 \text{ mm} \pm 2 \text{ mm}$ of Figure 4. In this case, no coupling is possible.

Accordingly, horizontal dimension ≥ 35 mm has been replaced by ≥ 38 mm in the corrected Figure 3.