

M 05

Kolben, Pleuel
Piston, conrod
Piston, bielle
Embolo, biela
Pistone, biella

M 06

Zylinder
Cylinder
Cylindre
Cilindro
Cilindro

Tafel Nr.
Tabl. No.
Tavola N.

07

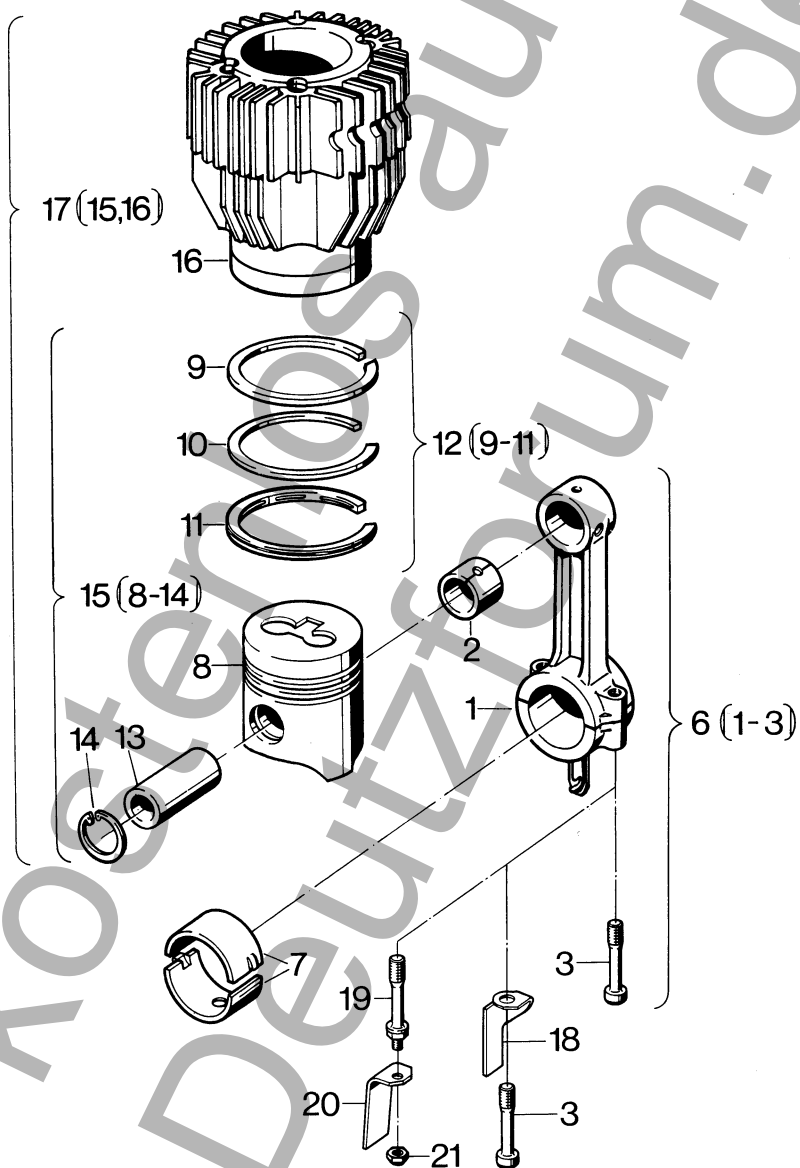


Fig.- No.	HATZ Ident-No.	Stück Qty.					P / W d / D	Bemerkungen Notes		
E 71 E 75 E 79 E780 E786										
13	50101800	1	1	-	-	-				
13	50108200	-	-	1	1	-				
13	50106400	-	-	-	-	1				
14	50020600	2	2	-	-	-	25 x 1,2	DIN 472		
14	50020700	-	-	2	2	-	28 x 1,2	DIN 472		
14	50020800	-	-	-	-	2	30 x 1,2	DIN 472		
15	00340104	1	1	-	-	-				
15	01234100	1	1	-	-	-	+ 0,5 mm			
15	00340204	1	1	-	-	-	+ 1,0 mm			
15	00356001	-	-	1	-	-				
15	01234300	-	-	1	-	-	+ 0,5 mm			
15	00356101	-	-	1	-	-	+ 1,0 mm			
15	00357203	-	-	-	1	-				
15	01234501	-	-	-	1	-	+ 0,5 mm			
15	00357303	-	-	-	1	-	+ 1,0 mm			
15	00997101	-	-	-	-	1				
15	01234701	-	-	-	-	1	+ 0,5 mm			
15	00997201	-	-	-	-	1	+ 1,0 mm			
16	-----	-	-	-	-	-				
17	00565700	1	1	-	-	-				
17	00566100	-	-	1	-	-				
17	00566201	-	-	-	1	-				
17	01200400	-	-	-	-	1				
18	03773301	1	1	1	-	-	n ≤ 1500 min ⁻¹			
18	03779300	-	-	-	1	-	n ≤ 1800 min ⁻¹			
19	03786000	-	-	-	-	1	n ≤ 1500 min ⁻¹			
20	03786200	-	-	-	-	1				
21	03786100	-	-	-	-	1				
								s. Taf. / Tabl. 04, Pos. 37		

M 07

Zylinderkopf
Cylinder head
Culasse
Culata
Testa

Tafel Nr.
Tabl. No.
Tavola N.

08

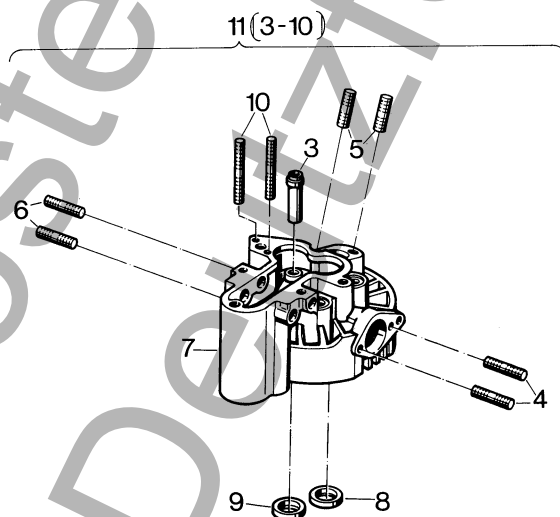
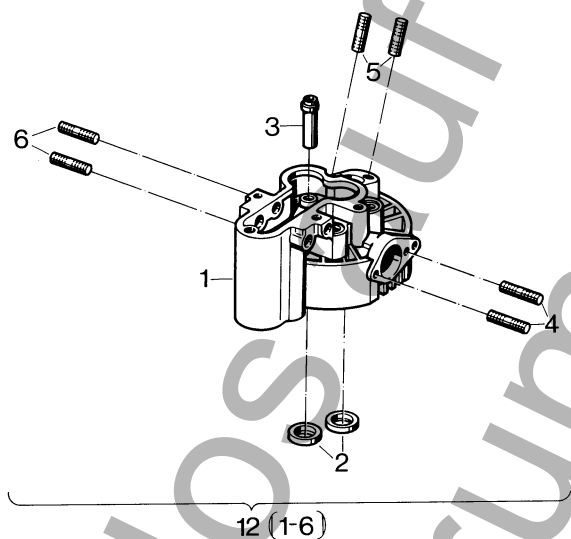


Fig.- No.	HATZ Ident-No.	Stück Qty.					P / W d / D	Bemerkungen Notes		
E 71 E 75 E 79 E780 E786										
1	-----	-	-	-	-	-				
2	-----	-	-	-	-	-				
3	03172310	2	2	2	2	-				
3	03203400	-	-	-	-	2				
4	50037300	2	2	-	-	-		M 8 x 18	DIN 835-10.9	
4	50285100	-	-	2	2	-		M 8 x 25	DIN 835-10.9	
4	50040300	-	-	-	-	2		M 10 x 22	DIN 939-5.6	
5	50038300	2	2	2	2	-		M 8 x 30	DIN 835-5.8	
5	50038500	-	-	-	-	2		M 8 x 40	DIN 835-5.8	
6	50037800	2	2	2	2	-		M 8 x 22	DIN 835-10.9	
6	50040300	-	-	-	-	2		M 10 x 22	DIN 939-5.6	
7	-----	-	-	-	-	-				
8	-----	-	-	-	-	-				
9	-----	-	-	-	-	-				
10	50036900	-	-	2	2	2		M 6 x 30	DIN 835-5.8	
11	00302211	-	-	1	-	-				
11	00300511	-	-	-	1	-				
11	01200801	-	-	-	-	1				
12	00302010	1	-	-	-	-				
12	00301810	-	1	-	-	-				

M 07

Zylinderkopf
Cylinder head
Culasse
Culata
Testa

Tafel Nr.
Tabl. No.
Tavola N.

09

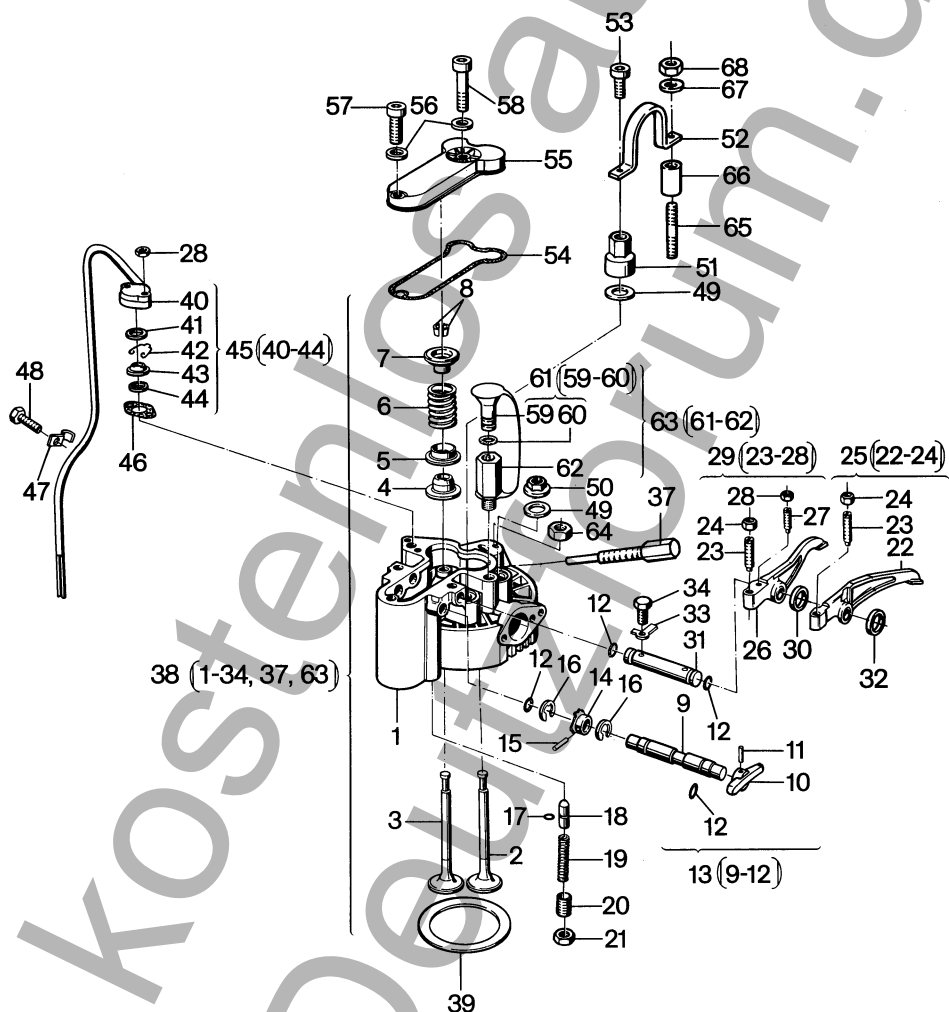


Fig.- No.	HATZ Ident-No.	Stück Qty.				P / W d / D	Bemerkungen Notes
E 71 E 75 E 79 E780 E786							
1	00302010	1	-	-	-	-	
1	00301810	-	1	-	-	-	
1	00302211	-	-	1	-	-	
1	00300511	-	-	-	1	-	
1	01200801	-	-	-	-	1	
2	03124310	1	1	1	1	-	
2	03765900	-	-	-	-	1	
3	03124310	1	1	1	1	-	
3	03019910	-	-	-	-	1	
4	03172400	2	2	2	2	-	
4	03203200	-	-	-	-	2	
5	03173000	2	2	2	2	-	
5	03203300	-	-	-	-	2	
6	03172000	2	2	2	2	-	
6	03158701	-	-	-	-	2	
7	03004010	2	2	2	2	-	
7	03018510	-	-	-	-	2	
8	03171910	2	2	2	2	-	
8	03620900	-	-	-	-	2	
9	-----	-	-	-	-	-	
10	03173401	1	1	1	1	1	
11	50034600	1	1	1	1	1	4 x 18 DIN 1481
12	40022300	4	4	4	4	4	d1
13	00340800	1	1	1	1	1	
14	03000801	1	1	1	1	1	
15	50034100	1	1	1	1	1	3 x 16 DIN 1481
16	40050200	2	2	2	2	2	
17	50154200	1	1	1	1	1	d1
18	03010300	1	1	1	1	1	
19	03172801	1	1	1	1	1	
20	50005000	1	1	1	1	-	AM 10 x 25 DIN 913-45H
20	50005200	-	-	-	-	1	AM 10 x 35 DIN 913-45H
21	50023500	1	1	1	1	1	M 10 DIN 934-8

M 07

Zylinderkopf
Cylinder head
Culasse
Culata
Testa

Tafel Nr.
Tabl. No.
Tavola N.

09

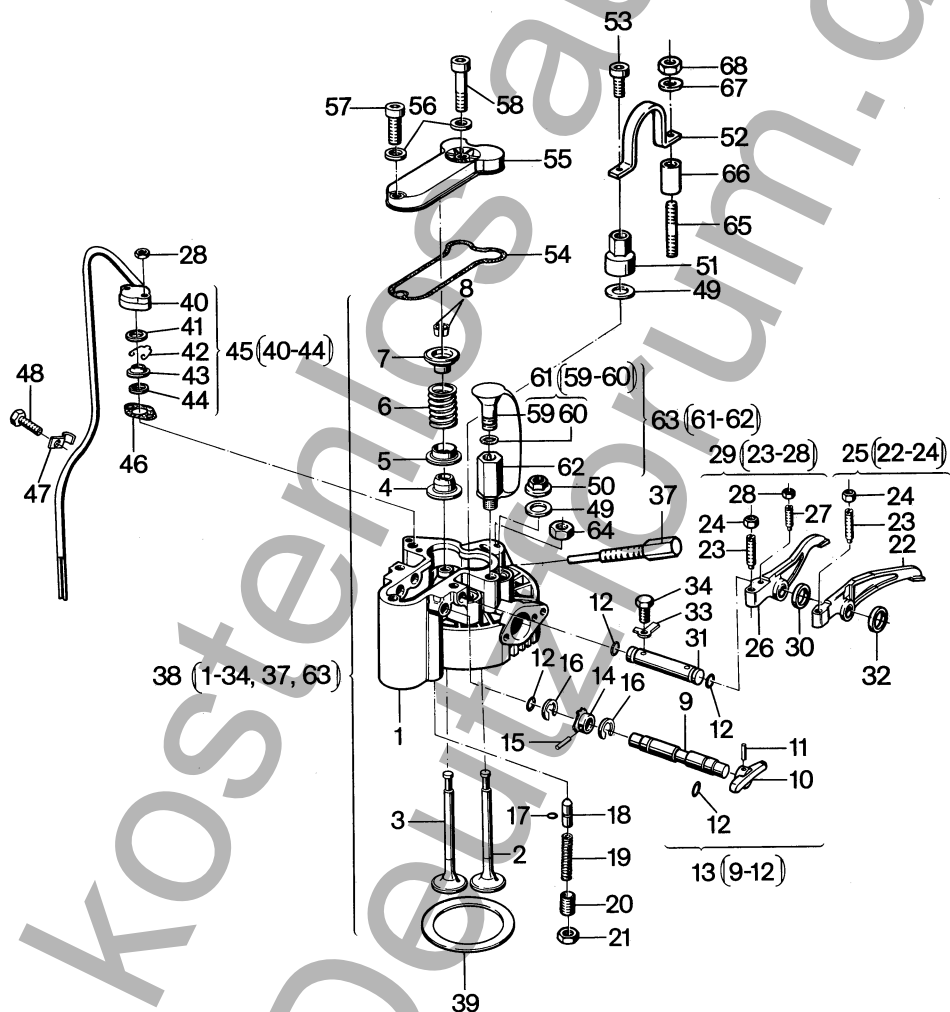


Fig.- No.	HATZ Ident-No.	Stück Qty.					P / W d / D	Bemerkungen Notes	
E 71 E 75 E 79 E780 E786									
22	-----	-	-	-	-	-			
23	03003700	2	2	2	2	2			
24	03173100	2	2	2	2	2	W2		
25	00340503	1	1	1	1	1			
26	-----	-	-	-	-	-			
27	03022001	1	1	1	1	1			
28	50144400	-	-	1	1	1	P2	M 6	DIN 934-8 A3C
29	00340604	1	1	1	1	1			
30	03034401	-	-	-	-	0..1		4,0 mm	
30	03405300	-	-	-	-	0..1		4,1 mm	
30	03400700	-	-	-	-	0..1		4,2 mm	
30	03400800	-	-	-	-	0..1		4,3 mm	
31	03172100	1	1	1	1	1			
32	03169400	0..1	0..1	0..1	0..1	0..1		0,10 mm	
32	03169600	0..1	0..1	0..1	0..1	0..1		0,20 mm	
32	03169700	0..1	0..1	0..1	0..1	0..1		0,30 mm	
32	03169800	0..1	0..1	0..1	0..1	0..1		0,50 mm	
33	50018700	2	2	2	2	2		6,4	DIN 463-St
34	50025500	2	2	2	2	-		M 6 x 12	DIN 933-8.8
34	50025700	-	-	-	-	2		M 6 x 16	DIN 933-8.8
37	03011500	1	1	1	1	-			
38	00412901	1	-	-	-	-			
38	00412503	-	1	-	-	-			
38	00413003	-	-	1	-	-			
38	00413101	-	-	-	1	-			
38	00997302	-	-	-	-	1			
39	03172200	0..1	0..1	-	-	-		0,40 mm	
39	03173500	0..1	0..1	-	-	-	d1	0,50 mm	
39	03173600	0..1	0..1	-	-	-		0,60 mm	
39	03173700	0..1	0..1	-	-	-	d1	0,70 mm	
39	03173800	0..1	0..1	-	-	-		0,80 mm	
39	03173900	0..1	0..1	-	-	-		0,90 mm	
39	03174000	0..1	0..1	-	-	-		1,00 mm	

M 07

Zylinderkopf
Cylinder head
Culasse
Culata
Testa

Tafel Nr.
Tabl. No.
Tavola N.

09

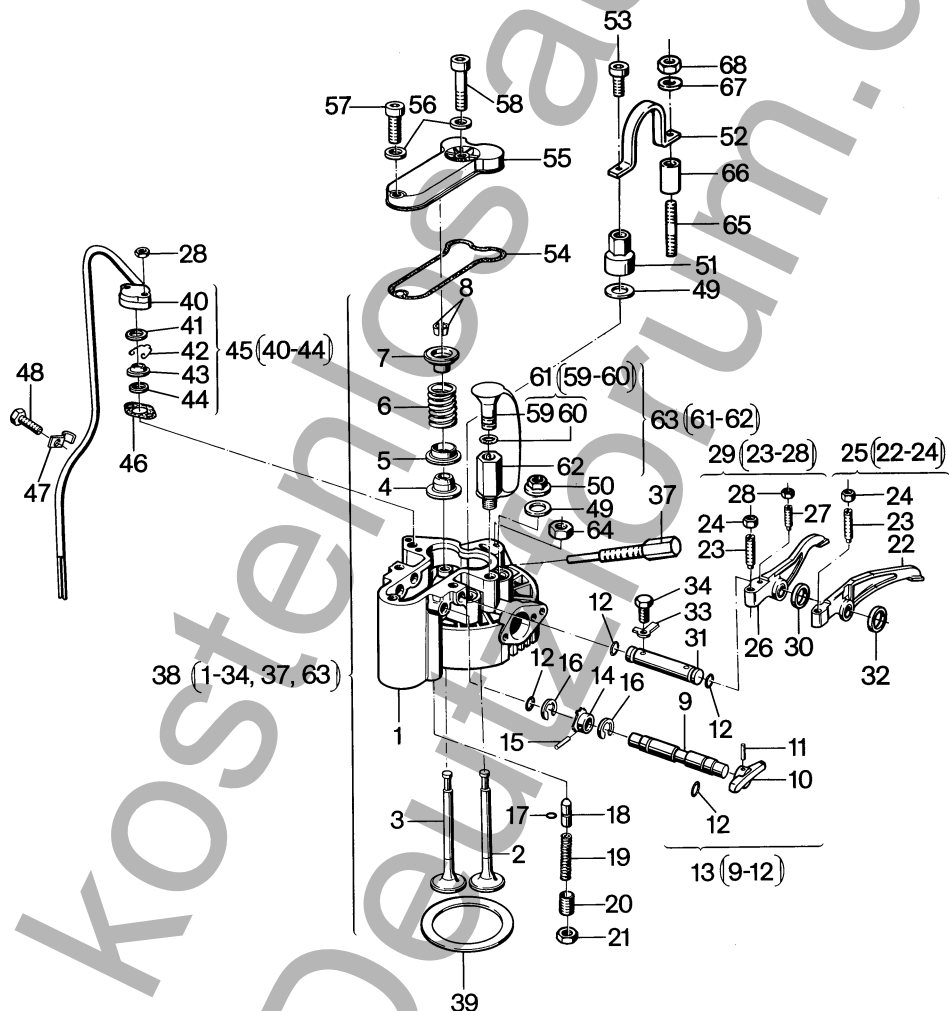


Fig.- No.	HATZ Ident-No.	Stück Qty.					P / W d / D	Bemerkungen Notes		
E 71 E 75 E 79 E780 E786										
39	03197300	-	-	0..1	0..1	-		0,40 mm		
39	03197400	-	-	0..1	0..1	-	d1	0,50 mm		
39	03197500	-	-	0..1	0..1	-		0,60 mm		
39	03197600	-	-	0..1	0..1	-	d1	0,70 mm		
39	03197700	-	-	0..1	0..1	-		0,80 mm		
39	03197800	-	-	0..1	0..1	-	d1	0,90 mm		
39	03197900	-	-	0..1	0..1	-		1,00 mm		
39	03203500	-	-	-	-	0..1		0,40 mm		
39	03203600	-	-	-	-	0..1		0,50 mm		
39	03203700	-	-	-	-	0..1		0,60 mm		
39	03203800	-	-	-	-	0..1	d1	0,70 mm		
39	03203900	-	-	-	-	0..1		0,80 mm		
39	03204000	-	-	-	-	0..1	d1	0,90 mm		
39	03204100	-	-	-	-	0..1		1,00 mm		
40	-----	-	-	-	-	-				
41	03444300	-	-	1	1	1				
42	03172700	-	-	1	1	1				
43	03172500	-	-	1	1	1				
44	03172600	-	-	1	1	1				
45	00356301	-	-	1	-	-				
45	00357601	-	-	-	1	-				
45	00360001	-	-	-	-	1				
46	03172901	-	-	1	1	1	d1			
47	03197201	-	-	1	-	-				
47	03016600	-	-	-	1	1				
48	50026700	-	-	1	1	1		M 8 x 16	DIN 933-8.8	
49	03171700	4	4	4	4	4	P4			
50	03171800	2	2	2	2	-	P2			
50	03183000	-	-	-	-	2	P2			
51	03458000	2	2	2	2	-	P2			
51	03187301	-	-	-	-	2	P2			
52	03756900	1	1	1	1	-				
52	03756800	-	-	-	-	1				

M 07

Zylinderkopf
Cylinder head
Culasse
Culata
Testa

Tafel Nr.
Tabl. No.
Tavola N.

09

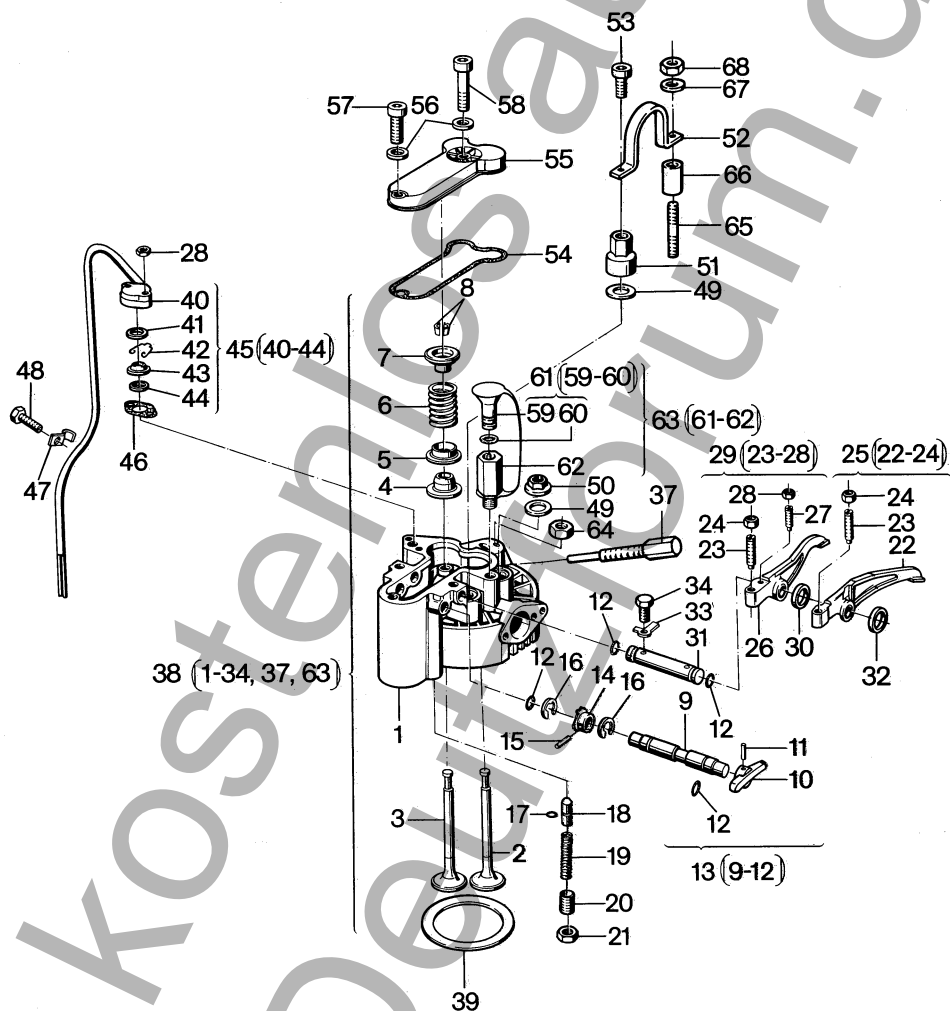


Fig.- No.	HATZ Ident-No.	Stück Qty.					P / W d / D	Bemerkungen Notes		
E 71 E 75 E 79 E780 E786										
53	50051400	2	2	2	2	-		M 8 x 12	DIN 912-8.8	
54	03174100	1	1	1	1	-	W3, d1			
54	03204200	-	-	-	-	1	W3, d1			
55	03174200	1	1	1	1	-				
55	03018300	-	-	-	-	1				
56	50162900	2	2	2	2	2	W6, d2	A 8 x 14	DIN 7603-Cu	
57	50052200	1	1	1	1	1		M 8 x 30	DIN 912-8.8	
58	50052900	1	1	1	1	-		M 8 x 60	DIN 912-8.8	
58	50053000	-	-	-	-	1		M 8 x 70	DIN 912-8.8	
59	-----	-	-	-	-	-				
60	40081700	2	2	2	2	2	d2	12 x 2		
61	00736300	1	1	1	1	1	P1			
62	-----	-	-	-	-	-				
63	00950700	1	1	1	1	1				
64	50022900	2	2	2	2	2		M 8	DIN 934-8	
65	50130000	-	-	-	-	2		M 8 x 35	DIN 938-8.8	
66	03641300	-	-	-	-	2				
67	50148100	-	-	-	-	2		8,4	DIN 125-St A3C	
68	50022900	-	-	-	-	2		M 8	DIN 934-8	

M 09

Stoßstangen
Pushrod
Tige de culbuteur
Varilla de balancin
Asta bilanciari

M 11

Steuerdeckel
Timing cover
Couvercle distribution
Tapa de mando
Coperchio distribuzione

Tafel Nr.
Tabl. No.
Tavola N.

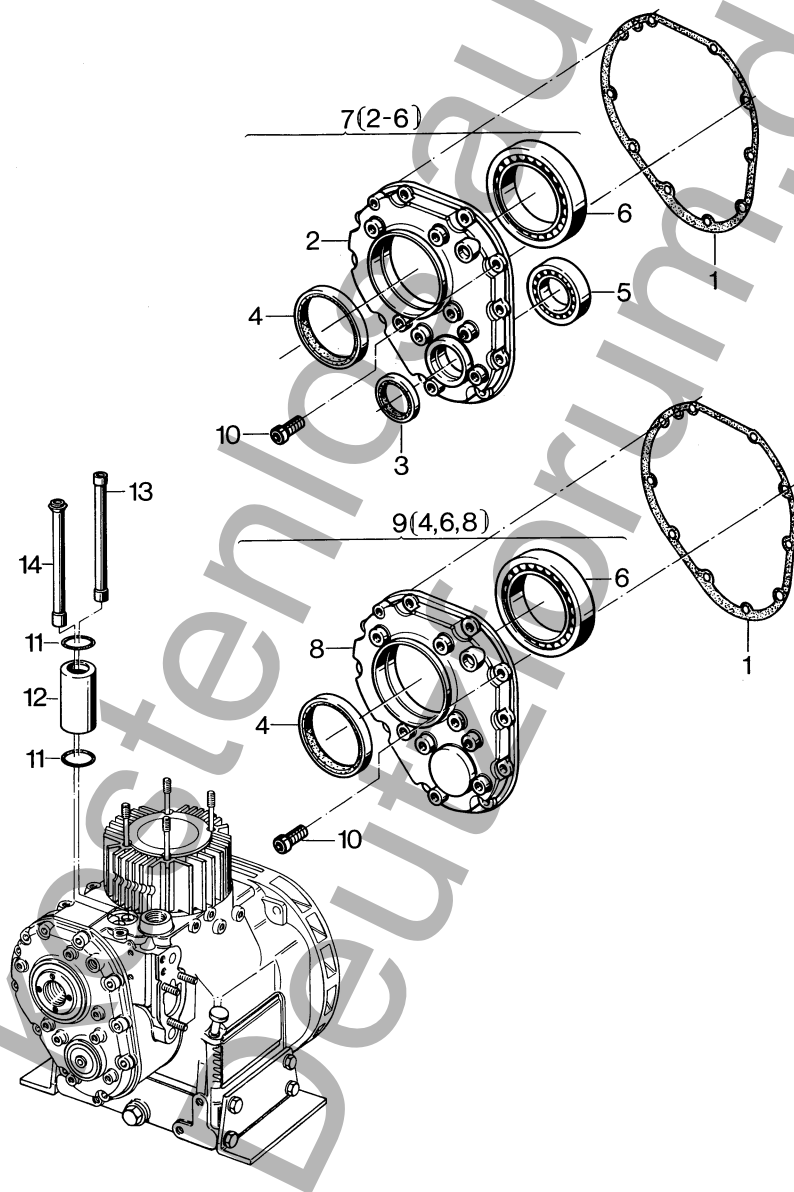
10

Fig.- No.	HATZ Ident-No.	Stück Qty.					P / W d / D	Bemerkungen Notes
E 71 E 75 E 79 E780 E786								
1	03174500	1	1	1	1	1	D1	
2	-----	-	-	-	-	-		
3	40033800	1	1	1	1	1	D1	
4	40034700	1	1	1	1	1	D1	
5	50013000	1	1	1	1	1		
6	50015500	1	1	1	1	1		
7	00341101	1	1	1	1	1		E
8	-----	-	-	-	-	-		
9	00341301	1	1	1	1	1		ES
10	50052100	10	10	10	10	10		M 8 x 25 DIN 912-8.8
11	40023200	2	2	2	2	2	d2	
12	03174302	1	1	1	-	-		
12	03200301	-	-	-	1	-		
12	03204301	-	-	-	-	1		
13	00340901	1	1	1	-	-		
13	00357701	-	-	-	1	-		
13	00360101	-	-	-	-	1		
14	00341001	1	1	1	-	-		
14	00357801	-	-	-	1	-		
14	00360201	-	-	-	-	1		

M 14

Einspritzausr stung
Injection equipment
Equipment d'injection
Equipo de inyecci n
Equipaggiamento iniezione

Tafel Nr.
Tabl. No.
Tavola N.

11

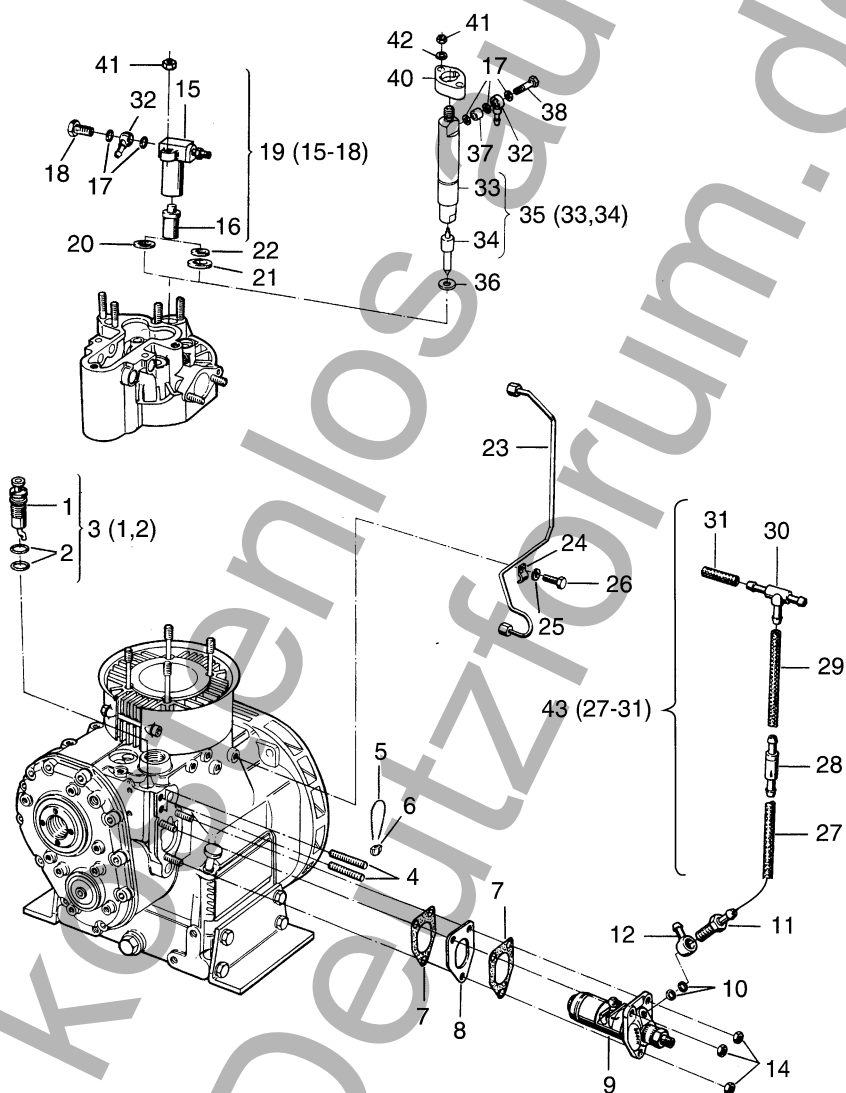


Fig.- No.	HATZ Ident-No.	Stück Qty.					P / W d / D	Bemerkungen Notes
E 71 E 75 E 79 E780 E786								
1	-----	-	-	-	-	-		
2	40022900	2	2	2	2	2		
3	00341601	1	1	1	1	1		
4	03174600	2	2	2	2	2		
5	40021500	1	1	1	1	1		
6	40021400	1	1	1	1	1		
7	03168400	2	2	2	2	2	D2	
8	03168302	0..1	0..1	0..1	0..1	0..1		0,15 mm
8	03168501	0..1	0..1	0..1	0..1	0..1		0,20 mm
8	03168601	0..1	0..1	0..1	0..1	0..1		0,25 mm
8	03168701	0..1	0..1	0..1	0..1	0..1		0,30 mm
9	40005201	1	1	1	-	-		
9	40036901	-	-	-	1	-		
9	50257110	-	-	-	-	1		
10	50001100	2	2	2	2	2	D2	A 12 x 15,5 DIN 7603-Cu
11	03662300	1	1	1	1	1		
12	50015800	1	1	1	1	1		
14	50022900	3	3	3	3	3	M 8	DIN 934-8
15	-----	-	-	-	-	-		
16	40004600	1	1	1	1	-	P1	
17	50000900	2	2	2	2	3	d2	A 8 x 11,5 DIN 7603-Cu
18	50006100	1	1	1	1	-		A 2/3 DIN 7623
19	40006700	1	1	-	-	-		
19	40006800	-	-	1	1	-		
20	03160500	1	1	-	-	-	d1	
21	03012900	-	-	1	1	-		
22	40003000	-	-	1	1	-	P1	
23	00341701	1	1	1	-	-		
23	00357900	-	-	-	1	-		
23	00997400	-	-	-	-	1		
24	03174700	1	1	1	1	1		
25	50002800	1	1	1	1	1	8	DIN 128
26	50026700	1	1	1	1	1	M 8 x 16	DIN 933-8.8

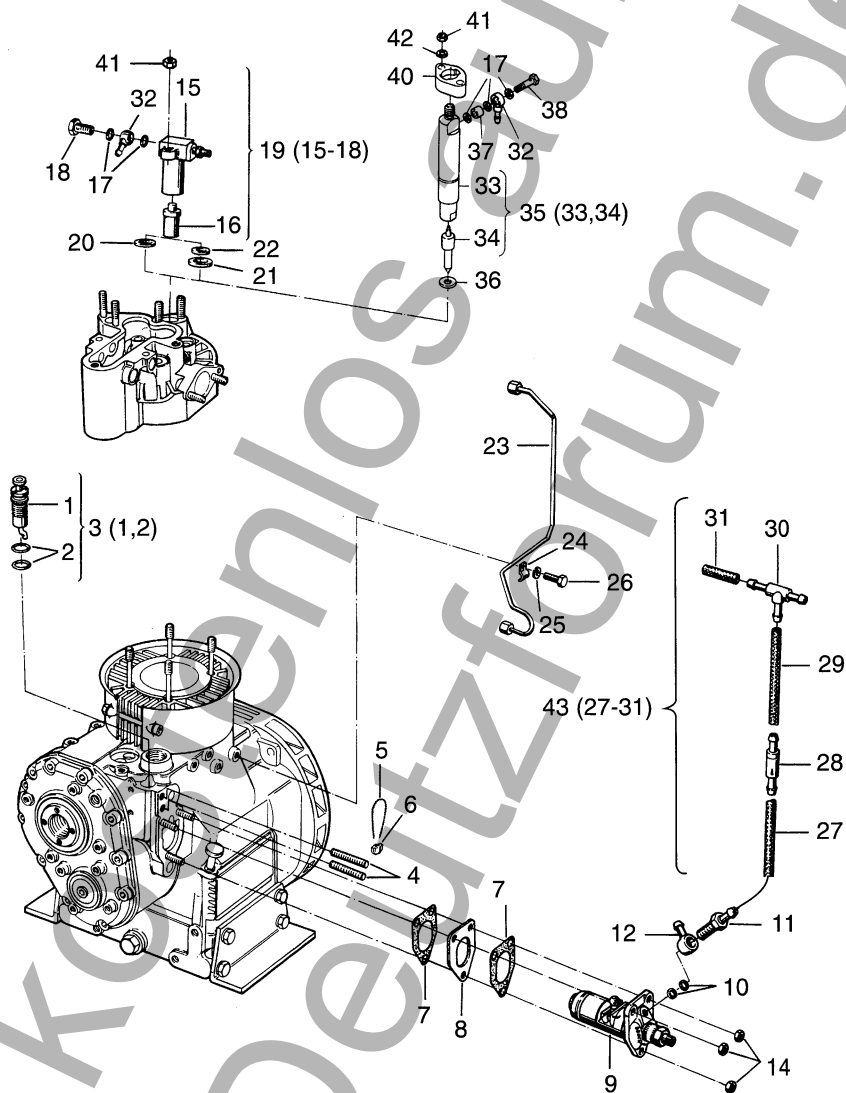


Fig.- No.	HATZ Ident-No.	Stück Qty.					P / W d / D	Bemerkungen Notes		
E 71 E 75 E 79 E780 E786										
27	03663700	1	1	1	1	1		4,5 x 2,5 – 50 mm		
28	00805500	1	1	1	1	1	P1			
29	03806800	1	1	1	1	1		4,5 x 2,5 – 380 mm		
30	50157800	1	1	1	1	1				
31	03663700	1	1	1	1	1		4,5 x 2,5 – 50 mm		
32	50015700	1	1	1	1	1				
33	-----	-	-	-	-	-				
34	50257610	-	-	-	-	1	P1			
35	50257210	-	-	-	-	1				
36	40085001	-	-	-	-	1	d1			
37	03292900	-	-	-	-	1				
38	03292800	-	-	-	-	1				
39	-----	-	-	-	-	-				
40	03285000	-	-	-	-	1				
41	50022900	2	2	2	2	2	P2	M 8	DIN 934-8	
42	50002800	-	-	-	-	2	P2	8	DIN 128	
43	00835100	1	1	1	1	1				

Schwungräder
Flywheels
Volants
Volantes
Volano

M 17

Verschaltung
Cowling
Tôle refroid.
Revestimiento
Carter ventilatore

M 26

Tafel Nr.
Tabl. No.
Tavola N.

12

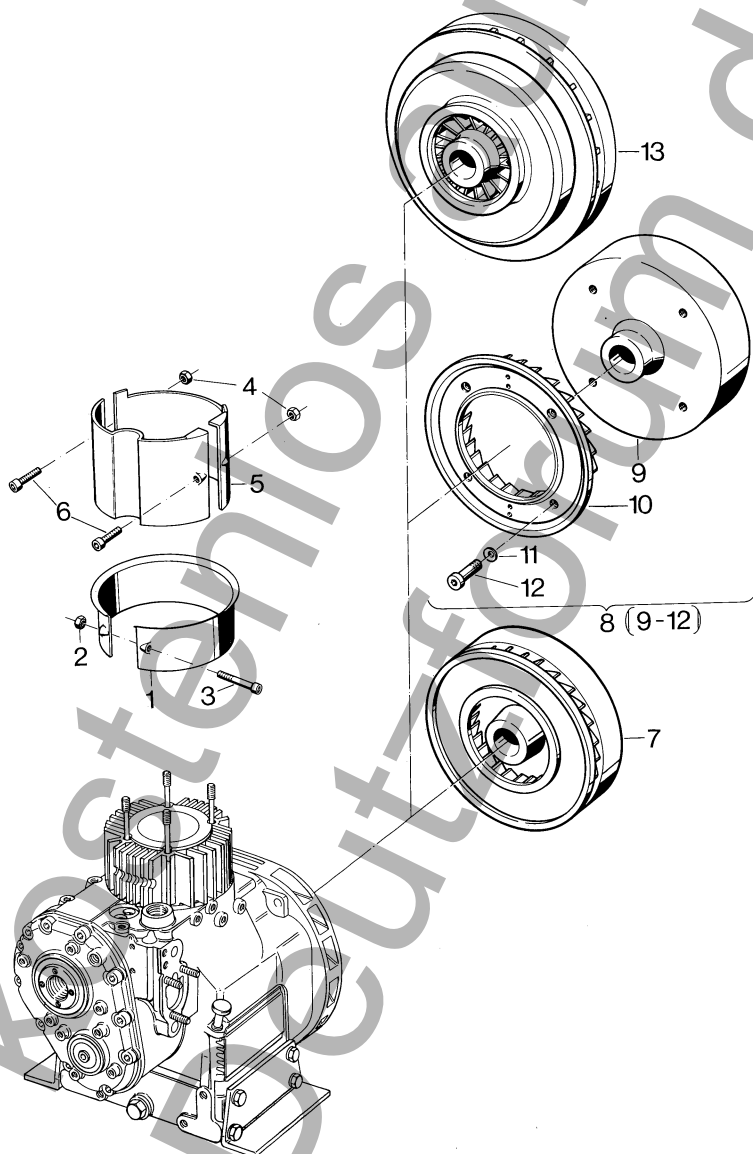


Fig.- No.	HATZ Ident-No.	Stück Qty.					P / W d / D	Bemerkungen Notes
E 71 E 75 E 79 E780 E786								
1	03006800	1	1	-	-	-		
1	03013401	-	-	1	-	-		
1	03015801	-	-	-	1	-		
2	40028200	1	1	1	1	-	M 5	
3	50049800	1	1	1	1	-	AM 5 x 70	DIN 84-8.8
4	40028200	-	-	-	-	2	M 5	SSN 440-8 Cu
5	01201700	-	-	-	-	1		
6	50049600	-	-	-	-	2	AM 5 x 60	DIN 84-4.8
7	03009403	1	1	-	-	-		
8	00908500	-	-	1	-	-		
9	-----	-	-	-	-	-		
10	03113000	1	1	1	-	-		
11	40027800	4	4	4	-	-		
12	40035700	4	4	4	-	-	M 8 x 35	DIN 6912-10.9
13	03017010	-	-	-	1	-		
13	03769101	-	-	-	-	1		

Kraftstoffbehälter
 Fuel tank
 Reservoir à carburant
 Depósito combustible
 Serbatoio e circuito combustibile

Tafel Nr.
 Tabl. No.
 Tavola N.

13

53(51,52)

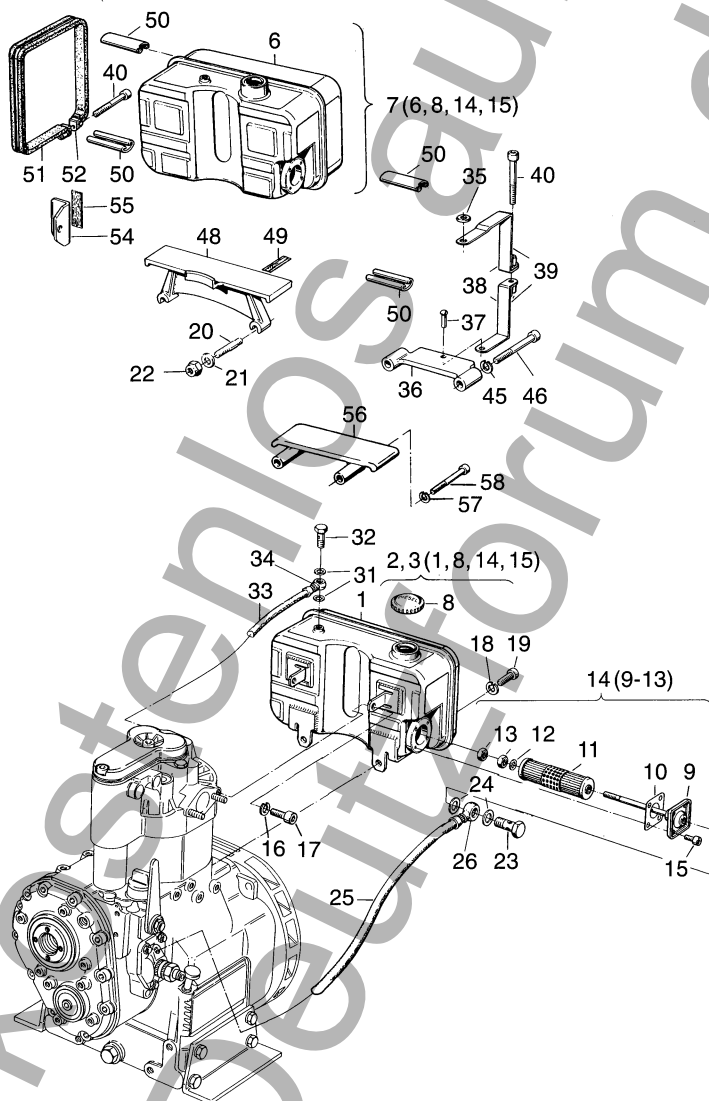


Fig.- No.	HATZ Ident-No.	Stück Qty.					P / W d / D	Bemerkungen Notes	
E 71 E 75 E 79 E780 E786									
1	-----	-	-	-	-	-			
2	00412600	1	1	1	-	-		5 Ltr.	
3	00412700	1	1	1	-	-		9 Ltr.	
4	-----	-	-	-	-	-			
5	-----	-	-	-	-	-			
6	-----	-	-	-	-	-			
7	00413200	1	1	1	1	1		9 Ltr.	
8	40032701	1	1	1	1	1	P1		
9	-----	-	-	-	-	-			
10	03150202	1	1	1	1	1	W2,D1		
11	40043800	1	1	1	1	1	W2		
12	03150600	1	1	1	1	1	W1		
13	50023200	2	2	2	2	2	W2	BM 8	DIN 439-5 A3C
14	00329102	1	1	1	1	1			
15	50062700	4	4	4	4	4	W4	M 6 x 10	DIN 912-8.8
16	50208500	2	2	2	2	-		8	DIN 128-A3C
16	50135600	-	-	-	-	2		10	DIN 128-A3C
17	50165400	2	2	2	-	-		M 8 x 16	DIN 912-8.8 A3C
17	50051900	-	-	-	2	-		M 8 x 20	DIN 912-8.8
17	50053800	-	-	-	-	2		M 10 x 25	DIN 912-8.8
18	50135600	2	2	2	-	-		10	DIN 128-A3C
19	50173200	2	2	2	-	-		M 10 x 20	DIN 912-8.8 A3C
20	50180300	-	-	-	2	2		M 10 x 35	DIN 938-8.8 A3C
21	50145900	2	2	2	2	2		B 10,5	DIN 125-St A3C
22	50180200	-	-	-	2	2		M10	SSN001-8Zn
23	50006400	1	1	1	1	1		10-3	DIN 7643
24	50001200	2	2	2	2	2	W4,D2	A 14 x 18	DIN 7603-Cu
25	03693400	1	1	1	1	1		7,00 x 2,5 – 360 mm	
26	50015900	1	1	1	1	1		NW 8/6	
31	50000900	2	2	2	2	2		A 8 x 11,5	DIN 7603-Cu
32	50006100	1	1	1	1	1		4-5-3	DIN 7643
33	03663700	1	1	1	1	1		4,5 x 2,5 – 50 mm	
34	50015700	1	1	1	1	1		NW 3	

A 01

13



Fig.- No.	HATZ Ident-No.	Stück Qty.					P / W d / D	Bemerkungen Notes		
E 71 E 75 E 79 E780 E786										
35	50148000	1	1	1	-	-	M 8	DIN 934-8 A3C		
36	03006310	1	1	1	-	-				
37	50165500	1	1	1	-	-	M 6 x 12	DIN 933-8.8 A3C		
38	00778300	1	1	1	-	-	5 Ltr.			
39	00778201	1	1	1	-	-	9 Ltr.			
40	03537700	2	2	2	2	2				
43	-----	-	-	-	-	-				
44	-----	-	-	-	-	-				
45	50002900	2	2	2	-	-	10	DIN 128		
46	50055200	2	2	2	-	-	M 10 x 60	DIN 912-8.8		
47	-----	-	-	-	-	-				
48	03015701	-	-	-	1					
48	03019001	-	-	-	-	1				
49	03506300	2	2	2	2	-				
49	03506400	-	-	-	-	2				
50	03188600	4	4	4	4	4				
51	00562700	2	2	2	-	-				
51	03200500	-	-	-	2	2				
52	00778500	-	-	-	2	2				
53	00562700	-	-	-	2	2				
54	03014800	2	2	2	2	-				
54	03018200	-	-	-	-	2				
55	03506200	2	2	2	2	2				
56	03853300	1	1	1	-	-				
57	50145900	2	2	2	-	-	10,5	DIN 125-St A3C		
58	50084000	2	2	2	-	-	M 10 x 90	DIN 912-8.8		